

**PRIVATE TRAIN
JOURNEYS
&
BOUTIQUE SHIP
CRUISES**





UNIQUE ADVENTURES ON RAILS AND RIVERS

Our selection of the finest trains,
extraordinary rail routes, and unique
cruises with small ships.

ORIENT SILK ROAD EXPRESS

Central Asia by Private Train

DECCAN ODYSSEY

India by Private Train

THE GREAT EUROPEAN EXPRESS

The Legendary Istanbul - Paris Railroad

SPAIN BY TRAIN

Luxury Trips Across the Iberian Peninsula

AFRICAN EXPLORER

South Africa and Namibia or Zimbabwe
and Mozambique by Private Train

MORE TRAINS & RAILROADS

Trans-Continental Train Trip Across Canada
Switzerland's Great Little Trains
Vietnam • Japan • Australia
Venice Simplon-Orient-Express •
Eastern & Oriental Express • Royal Scotsman

MAJESTIC MEKONG

Boutique Ship River Cruises
in Laos and Thailand

AMAZING AMAZON

Boutique Ship Jungle Cruises
in Brazil's Rainforests

MORE CRUISES ON SMALL SHIPS

Holy Ganges!
Vancouver Island's Wilderness
Madagascar • South Pacific • Papua New Guinea
Greece • Croatia • Scotland

Easy-Going E-Bike Journeys
Budget Railroad Vacations





THE PHILOSOPHY BEHIND OUR JOURNEYS

As Europe's most creative organizer of train journeys and charter cruises, Lernidee Trains & Cruises is your specialist for extraordinary trips to fascinating places. Our journeys focus on discovering unknown corners of the world and rediscovering classic destinations. Relying on the experience of nearly 40 years, we have made unusual itineraries an art form.

Our portfolio is full of exclusive journeys on some of the world's most famous train routes, exciting cruises all over the globe, and unique expeditions on all continents. Our trains and boutique ships offer the most convenient way of exploring remote countries and otherwise inaccessible regions.

Exciting excursions allow for authentic encounters; delicious local dishes whet the appetite for the distinctive flavors of exotic cultures; fascinating talks deepen the travel experience. Our expert tour guides provide professional, personalized attention.

Our trains and boutique ships head for natural wonders and significant cultural sites but most important of all, they acquaint our sophisticated guests with the authentic feel of local life. Our journeys are the perfect fit for adventurers and explorers at heart who like to travel in comfort and style. **TRAVELING WITH LERNIDEE** means returning home with new experiences, original insights, and broadened minds.

BENEFITS OF TRAVELING WITH

1

FIRST-CLASS SERVICE

- ◆ Shuttle service between hotel and airport on first and last days
- ◆ All transfers at travel destinations
- ◆ Luggage service where available
- ◆ No long waits or exhausting bus tours
- ◆ Entrance fees for attractions included
- ◆ Select first-class or mid-range hotels and lodges chosen to provide an even better feel for the country visited
- ◆ For train journeys: overnights on private trains and in hotels with option to leave large luggage on board during hotel stays
- ◆ Multiple languages available



2

EXPERT STAFF

- ◆ Professional tour guide system on most journeys: knowledgeable and dedicated tour director, competent group guide as well as several local guides with expert knowledge of the regions
- ◆ Sophisticated talks on local culture, history, and everyday life
- ◆ Doctor on board of select private trains
- ◆ Friendly and attentive crew on call to meet and exceed guests' needs



LERNIDEE TRAINS & CRUISES

3

AUTHENTIC FLAVORS AND ENCOUNTERS

- ◆ Comprehensive excursion and sight-seeing packages included
- ◆ Meetings with locals for a better understanding of life in destination countries
- ◆ Most meals included, featuring delights of regional and international cuisine and tastings of local specialty dishes
- ◆ Profound insights into the history, customs, and everyday life of the regions visited
- ◆ For convenient traveling: no dress code



4

EVERYTHING ELSE

- ◆ Visa support as needed
- ◆ Detailed logbook with information about the journey
- ◆ Exciting pre- and post-tours and extended stays to explore major cities or relax on pristine beaches, planned and organized to fulfill our guests' individual wishes
- ◆ Whatever else it takes to make a journey enjoyable, pleasant, and memorable





THE LEGENDARY SILK ROAD

Experience the fascination of the diverse cultures along Central Asia's legendary Silk Road, the world's most famous trade route. The **ORIENT SILK ROAD EXPRESS**, our magnificent private train, is the only convenient way of traveling the fairy-tale realms of the fabulous Stans. Our journeys to Kazakhstan, Uzbekistan, Kyrgyzstan, and Tajikistan offer inimitable insights into the world of Scheherazade. Visits to the old cities, ancient ruins, and vast deserts along the traditional trade route let the tales of *Arabian Nights* come to life.

But what's most outstanding about this journey is the chance to experience cultures, peoples, and delicious cuisine in regions with little to no infrastructure that are otherwise barely accessible for the international visitor—while enjoying the amenities of traveling by private train.





SILK ROAD SIGHTS: A SNEAK PEAK

UNESCO World Heritage sites wherever you look—that's what makes the legendary **SILK ROAD** in Central Asia so breathtakingly stunning. Magnificent mosques, massive mausoleums, marvelous madrassas, mighty minarets, and many more majestic

monuments make for magical memories. Add to that all the ruins of ancient cities, the boundless deserts, the Tian Shan Mountains, the merry markets—and you'll see quickly that this is a journey into the world of Sheherazade's tales.



REGISTAN SQUARE in Samarkand is one of the most impressive sights in Central Asia. It is surrounded by three Islamic schools and was once used for public gatherings and executions. Its awe-inspiring architecture earned it a spot on the UNESCO World Heritage List.



If you find yourself in need of exotic spices, hand-woven shawls and blankets, or even cattle, a visit to one of **CENTRAL ASIA'S CLASSIC MARKETS** will supply you with all of those.



A stroll through the narrow **ALLEYWAYS OF SAMARKAND'S** Sha-i-Zinda necropolis offers a lot of opportunities to take stunning photos, as there is a new angle to be found at every corner.



Bukhara's religious **POI-KALAN COMPLEX** boasts a magnificent minaret, a marvelous madrassa, and a majestic mosque. Mongolian emperor Genghis Khan is said to have been so impressed by the grandeur of the mosque that he mistook it for a Khan's palace.



The city of **KHIVA** is an actual oasis and feels like a movie set built for filming a tale from *Arabian Nights*.



This lady and her troupe can be seen performing **DANCES IN TRADITIONAL COSTUMES** in the courtyard of a madrassa.



BISHKEK, where Nomad culture and modern life merge, is nestled amidst the breathtaking backdrop of the Tien Shan mountains.



PLOV, Uzbekistan's delicious national dish, is made of beef and/or lamb, rice, onions, carrots, and a variety of spices.



DROMEDARY OR CAMEL? After this journey, you will be able to tell them apart. This one here is a dromedary ... we think.



The medieval **ARK FORTRESS** is a walled city within the city of Bukhara. Built in the 5th century AD, it was once seat of the diverse emperors of Bukhara. Today, it's a museum complex showcasing archeological relics, the historical Throne Room and the Coronation Court.



ORIENT SILK ROAD EXPRESS: OUR TRAIN • OUR SERVICES

The **ORIENT SILK ROAD EXPRESS** is your ticket to an unforgettable journey. Travel in style and comfort on what will be your cozy home away from home in Central Asia. Come on board and enjoy a wide selection of compartments, friendly service, amazing food, and the most comfortable way to experience the legendary Silk Road!

- ◆ The Orient Silk Road Express is the only way to travel the Silk Road in Central Asia in comfort and style
- ◆ 4 categories of train compartments to choose from: 4-bed, 2-bed, and one category even with private bathroom
- ◆ Restaurant car serving delicious dishes during the day and doubling as bar car in the evenings, offering beer, wine, spirits, and a relaxed atmosphere
- ◆ Train is air-conditioned when rolling
- ◆ No long waits or exhausting bus tours
- ◆ Alternating overnights on private train and in hotels
- ◆ Shuttle service between hotel and airport on the first and the last day
- ◆ Porter service at train stations
- ◆ Doctor on board the private train available 24/7
- ◆ Entrance fees and sightseeing included

THE BEST WAY TO TRAVEL THE SILK ROAD

1

WIDE SELECTION OF COMPARTMENTS

CHOOSE

from 4 compartment categories, ranging from standard (Habibi) to premium compartments with private bathroom (Kalif).

2

WORLD-CLASS SERVICE

ENJOY

best-in-class service from friendly and knowledgeable staff, always ready to take care of your needs.

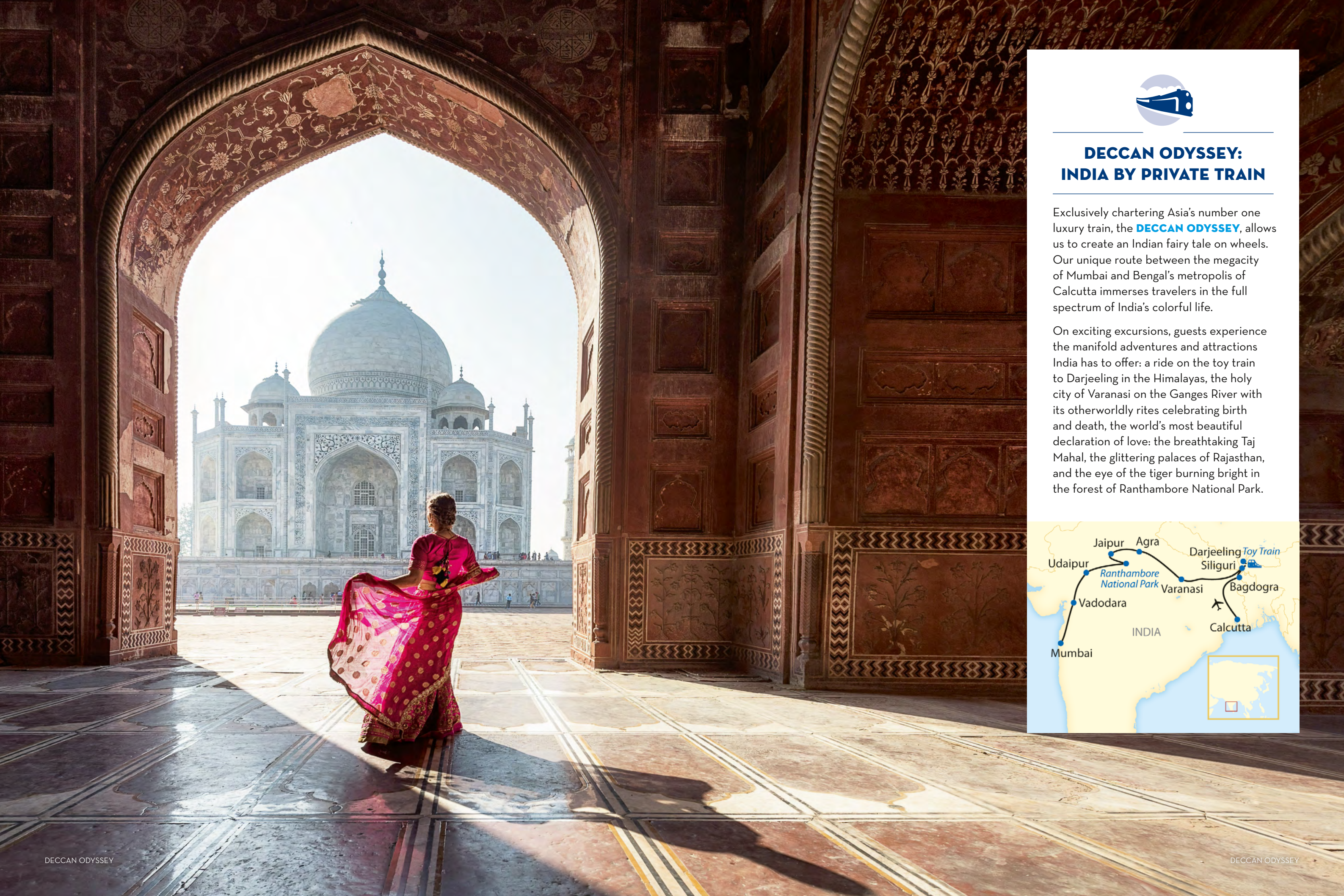
3

DELICACIES OF THE SILK ROAD

TASTE

a new world of flavor, served in cozy restaurant cars, offering nightly bar service.





DECCAN ODYSSEY: INDIA BY PRIVATE TRAIN

Exclusively chartering Asia's number one luxury train, the **DECCAN ODYSSEY**, allows us to create an Indian fairy tale on wheels. Our unique route between the megacity of Mumbai and Bengal's metropolis of Calcutta immerses travelers in the full spectrum of India's colorful life.

On exciting excursions, guests experience the manifold adventures and attractions India has to offer: a ride on the toy train to Darjeeling in the Himalayas, the holy city of Varanasi on the Ganges River with its otherworldly rites celebrating birth and death, the world's most beautiful declaration of love: the breathtaking Taj Mahal, the glittering palaces of Rajasthan, and the eye of the tiger burning bright in the forest of Ranthambore National Park.





DECCAN ODYSSEY: A SNEAK PEAK

A passage through India—that's what our journey with the legendary **DECCAN ODYSSEY** train offers, and in the most comfortable way imaginable. Travelers enjoy first-rate service and excellent

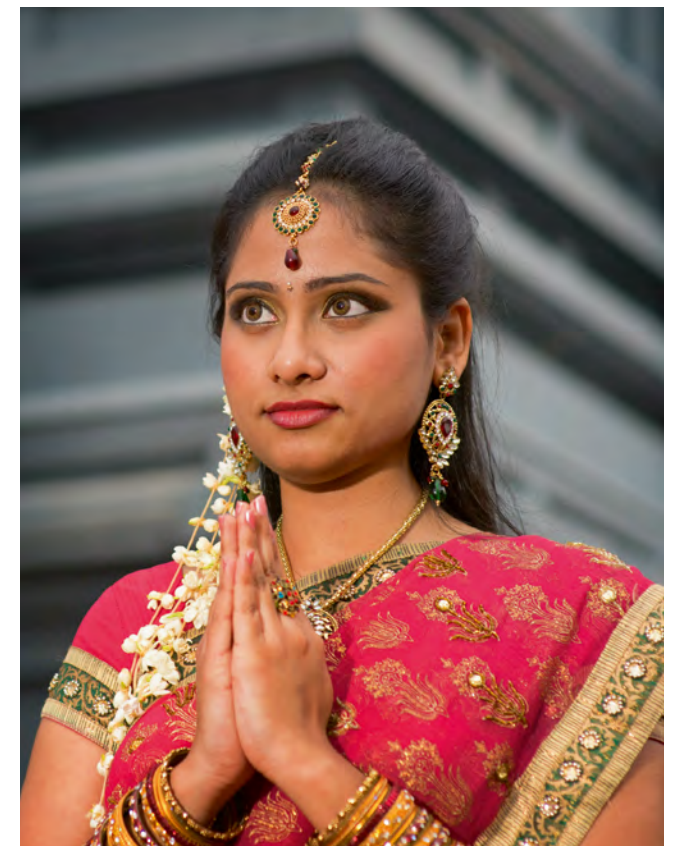
cuisine in the dining car, and pure luxury in the lavishly designed compartments, each of them equipped with a private bathroom and WC, making the Deccan Odyssey a veritable hotel on wheels.



The majestic **TAJ MAHAL** is one of the New Seven Wonders of the World and a UNESCO World Heritage Site. A moment first-time visitors never forget: stepping through the entrance gates and seeing the snow-white monument of infinite dimensions emerging on the horizon.



Tiger! Tiger! burning bright: In the forest of **RANTHAMBORE NATIONAL PARK**, chances are excellent to spot these kitties.



The majority of women in India wear **SARIS**, wrap dresses made of a single strip of cloth intricately draped around the body.



Not far from **JAIPUR**, Rajasthan's gigantic Amber Fort, formerly the home of the Rajput maharajas, dazzles visitors with its sumptuous mirrored halls, once designed to reflect the flickering light of the candles used to illuminate the palace.



The iridescent façade of the **PALACE OF THE WINDS**. From behind its windows, noblewomen observed the busy bazaar.



The **POTTERS' QUARTER KUMORTULI** in Calcutta is famous for manufacturing statues of hindu idols like Durga or Ganesha.



Elephants in traditional make-up: Hinduism deems them sacred—they represent loyalty, power, fertility, and wisdom.



Priests are among the most revered individuals in India.



CALCUTTA'S VICTORIA MEMORIAL was built to honor Queen Victoria of the United Kingdom, who was also Empress of India until her death in 1901.



The Ganges is **INDIA'S HOLY RIVER**, and in the holy pilgrims' city of Varanasi, the otherworldly Aarti light ceremony can be witnessed on the Ganges banks each night, truly broadening visitors' horizons.



DECCAN ODYSSEY: OUR TRAIN • OUR SERVICES

The luxury train **DECCAN ODYSSEY** is the best way to travel the heart of India without having to relinquish the comforts and amenities of modern life. Every compartment is equipped with a private bathroom with shower and WC. Each car accommodates a maximum of eight guests, and one steward per car takes care of guests' needs day and night. For get-togethers with fellow travelers, the train offers a separate bar car and a social car with board games; there's also a wellness and fitness car. Indian and European delicacies are served in the two restaurant cars.

- ◆ Three compartment categories to choose from: Superior compartments with a double bed, Deluxe compartments with two single beds, and the larger Presidential compartment featuring an extra room with a sofa and two bathrooms
- ◆ All compartments equipped with private bathroom with shower and WC
- ◆ A maximum of 8 guests per car
- ◆ Bar service with cocktails, beer, and wine
- ◆ Laid-back atmosphere on board—casual clothing welcome
- ◆ Indian and European culinary specialties served in the restaurant car
- ◆ Wellness and fitness car with steam bath, treadmill, stationary bike and weights
- ◆ Shuttle service between hotel and airport on the first and the last day
- ◆ Porter service at train stations
- ◆ Excursions, entrance fees, and sightseeing included

THE BEST WAY TO TRAVEL INDIA

1 COZY COMPARTMENTS

UNWIND
in the privacy of comfy compartments, all of them equipped with a bathroom featuring shower and WC.

2 SPECTACULAR VIEWS

BE AMAZED
by fantastic panoramas behind the compartment window and get to know India on exciting excursions.

3 INDIAN HOSPITALITY

INDULGE IN
local specialties, prepared fresh by our chefs, and a selection of delicious wines.





THE GREAT EUROPEAN EXPRESS

It's one of the world's most literary train routes: the famed railroad between Istanbul and Paris. And it's all Agatha Christie's fault, ever since her most popular detective novel and at least two wildly successful movie versions with Sirs Peter Ustinov and Kenneth Branagh made travelers suspect a mystery behind each and every compartment door.

Our new train, the **GREAT EUROPEAN EXPRESS** (GEE), is bringing this legendary trip back to life in comfort and style, rolling across 7 European countries: France, Switzerland, Austria, Hungary, Romania, Bulgaria, and Turkey.

But it's not only 7 countries, but also 7 UNESCO World Heritage Sites: the banks of Paris's Seine River, the Champagne region's vineyards, Switzerland's Semmering Railroad, the historic centers of Vienna, Budapest, and Istanbul, and the Beech Forests of the Carpathians with Dracula's castle in Transylvania.





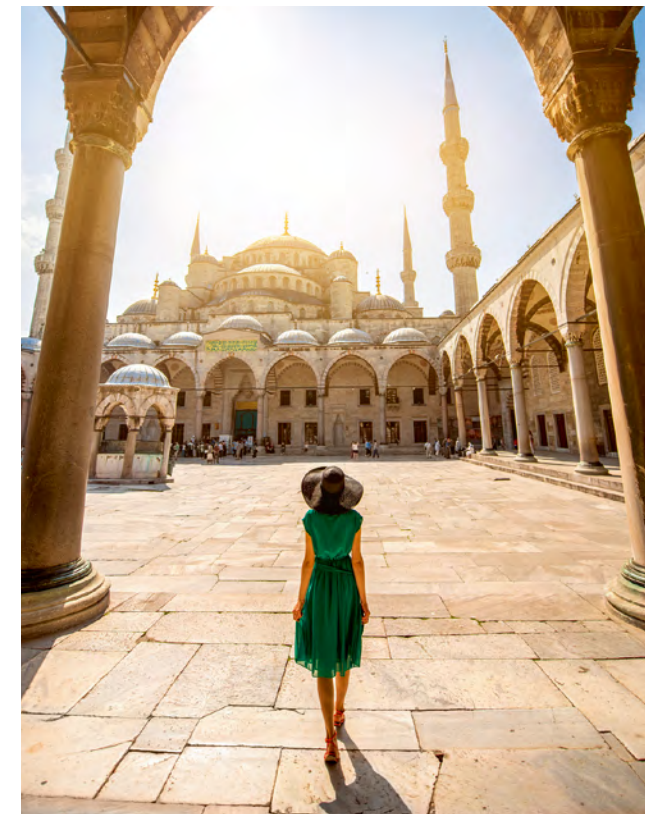
THE GREAT EUROPEAN EXPRESS: A SNEAK PEAK

The **GREAT EUROPEAN EXPRESS** offers travelers the most convenient way to capture the essence of Europe in only 9 days. Our nostalgic train is bringing the railroad journey between Istanbul and Paris made legendary by Agatha Christie back to life.

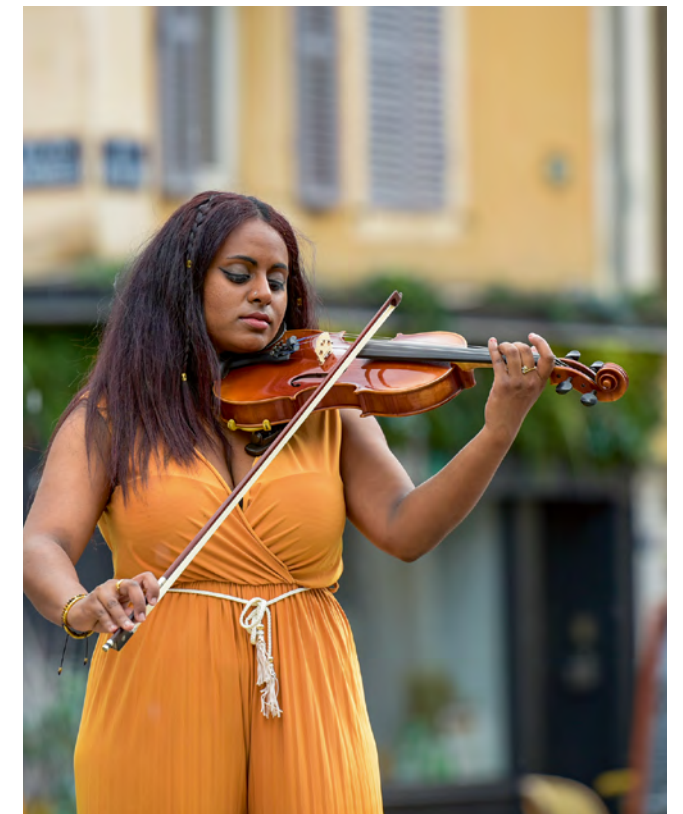
While enjoying a drink and reading a mystery novel in their comfy compartments or in the bar car, guests travel across 7 European countries: France, Switzerland, Austria, Hungary, Romania, Bulgaria, and Turkey.



The **EIFFEL TOWER**, also known as the Iron Lady, not only shares a moniker with a former British Prime Minister, it's also, in spite of some new skyscrapers, still the tallest structure in Paris. With about 7 million visitors per year, it's one of the world's most popular landmarks.



You may have wondered where the **BLUE MOSQUE** got its name from, when its façade is clearly anything but blue. Like so often, the answer lies within: Its blue tiles inside provide the explanation.



Yes, **PARIS** is the capital of music. In 1982, the *Fête de la Musique* was born here, an outdoor festival where musicians play for free. Meanwhile, Berlin and even New York have adopted the concept.



The **MICHAELERPLATZ SQUARE** might be in smack in the middle of Vienna, nevertheless construction work in 1990 surprisingly didn't uncover signs of Austrian life below its surface but rather pretty well-preserved relics of an ancient Roman settlement.



The **SZÉCHENYI CHAIN BRIDGE** from 1849 was the first permanent bridge to connect Budapest's two boroughs of Buda and Pest.



The **CSIKÓS**, the herdsman of the Hungarian Pusztá, enjoy world-wide fame for their acrobatics on horseback.



The **MOUNT PILATUS** Mountain Cable Car is not only a means of transport, it makes guests fly to the Pilatus Dragon legend.



There's no hill that accommodated as many artists as Paris's **MONTMARTRE**: Picasso, Van Gogh, Toulouse-Lautrec, and Modigliani lived here.



With walls up to 40 feet high and 10 feet thick, the **TSAREVETS FORTRESS** makes one suspect that its owners had no love for unannounced visitors.



LUCERNE'S CHAPEL BRIDGE is Europe's oldest covered wooden bridge—it was built in 1365! The octagonal water tower behind it is even older than the bridge. It's been used as a watchtower, jail, treasury, and even as a torture chamber.



BUDAPEST, the metropolis with its romantic setting along the Danube River has become a very popular filming location for international movies and shows, among them *The Bourne Identity*, the James Bond movie *Spectre* and the Netflix hit show *The Witcher*.



There's a rumor that below **BRASOV'S COLOSSAL MARKETPLACE** there's a network of secret tunnels once used to defend the city.



BRAN CASTLE in Transylvania is said to have been the real Count Dracula's home. None of our guests have met him yet, though.



Istanbul's **GREAT BAZAAR** is known for its artful mosaics, carvings, and, of course, the architectural beauty of its neighboring domes.



Bucharest's **PALACE OF THE PARLIAMENT** is the world's most expensive administrative building, valued at more than \$4 billion.



Four courts, gardens, pavilions, mosques, libraries—Istanbul's **TOPKAPI PALACE** is a city within a city.



The **HAGIA SOPHIA** was seen as the Eighth Wonder of the World in the Middle Ages because of its giant dome that seems to soar above the vast hall below.



GREAT EUROPEAN EXPRESS: OUR TRAIN • OUR SERVICES

The **GREAT EUROPEAN EXPRESS** is a rolling hotel for a maximum of 90 guests. All cars are designed in a nostalgic style but equipped with modern amenities. Delicious local meals are served in the two air-conditioned restaurant cars. Outside of dining hours, guests can enjoy drinks and conversations in the bar car. With its cozy compartments and friendly service crew, the classic train offers the perfect combination of traveling in a casual, yet elegant atmosphere while exploring Europe's most stunning cities.

- ◆ Three categories to choose from:
Classic: 37.7 sq ft (3.5 m²),
Comfort: 83.3 sq ft (7.74 m²)
Superior: 92.6 sq ft (8.6 m²)
- ◆ Compartments of the Comfort and Superior categories have their own private bathroom with shower and WC
- ◆ Compartments of the Comfort and Superior categories are equipped with air-condition, sockets, safe, hair-dryer, and bathroom amenities
- ◆ The affordable Classic compartments come with two bunk beds, reading light, a small table and sink
- ◆ Travelers in Classic compartments have access bathrooms shared by at most 18 guests

THE BEST WAY TO TRAVEL EUROPE

1

7 EUROPEAN COUNTRIES

CAPTURE

the essence of Europe in only 9 days and get to know 7 UNESCO World Heritage Sites of the Old World on this classic route.

2

BE AT HOME

RELAX

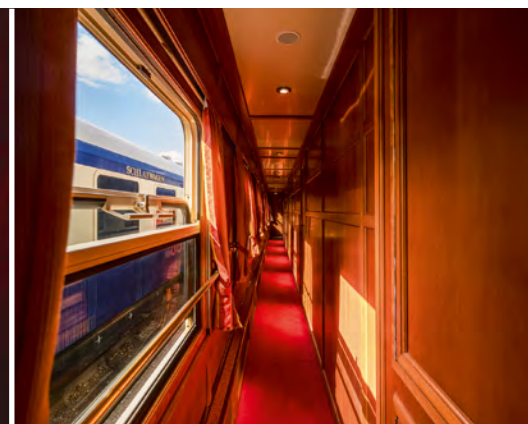
in the comfy compartments of a classic high-end train with modern amenities and first-rate service.

3

EXCURSIONS INCLUDED

EXPERIENCE

Europe on a gondola ride in the Swiss Alps, a wine tasting in France's Champagne region, an equestrian acrobatics show in Hungary's Puszta.





THE ROYAL AL ÁNDALUS: SPAIN BY TRAIN

Whoever said that the train in Spain stays mainly in the plain? That's inane! Rolling through rolling hills and majestic mountainscapes, the royal **AL ÁNDALUS** train pampers guests with spectacular service and exquisite culinary delights that are anything but plain.

Having served the British royal family for their vacations in the last century, the Belle Epoque-style luxury compartments and salon cars were designed to meet high standards.

They perfectly complement the wonders of Spain on a Trans-Iberian journey showing the surprisingly different cultures and landscapes of the Iberian Peninsula. With a singular route going from Andalusia in the south, home of the Flamenco, to Santiago de Compostela in the north, Europe's most popular pilgrim's destination.





AL ÁNDALUS: A SNEAK PEAK

Royal palaces, fairy-tale castles and churches, lush gardens, many of them popular as filming locations for Hollywood movies, flamenco dancers, terraced vineyards and green hills and valleys provide the

backdrop for one of Europe's most upscale trains, the royal **AL ÁNDALUS**. Each one of our exclusive routes offers a comprehensive image of the Iberian Peninsula's most colorful—and delightful—facets.



TOLEDO is known as the city of three cultures, since Christians, Jews, and Muslims have left their marks here. That explains oddities like the Mosque of Christ of the Light, which was once built as a mosque, then converted into a Christian church, and is now a museum.



Welcome to **ANDALUCIA**, where there's a secret fan language to decode. The woman in the picture is covering her nose with an open fan, thus signifying "I want to see you."



The medieval **ALCAZAR PALACE OF SEVILLE** boasts wonderful gardens you might recognize as the Water Gardens of Dorne from *Game of Thrones*.



You've never been to Spain, but you know this place anyway? Well, it might be you're familiar with the City of Theed on the Planet Naboo. Because that's what the famous **PLAZA DE ESPAÑA** in Seville, built for the World's Fair in 1929, was supposed to depict in *Star Wars II*.



The **MULTI-COURSE MENUS** on board the Al Ándalus are as delightful as the top-notch service is.



The Roman Bridge across the Guadalquivir River in the city of **CÓRDOBA** has been in service since about 45 BC.



Up to 350,000 people per year undertake the 500-mile pilgrimage from France to the Cathedral of **SANTIAGO DE COMPOSTELA**.



Who'd have thought they'd build a museum for a dance one day? But that's precisely what Seville's **FLAMENCO MUSEUM** is about.



If the **CATEDRAL DE LÉON** looks all French to you, you're spot on. It's Spain's best example of French-style Gothic architecture.



Simply gorgeous—if you pardon the pun. The **GORGE OF SIL CANYON** has been used for growing grapevines even in Roman days. The vast terraces that were built here are named Ribeira Sacra. If you spot this name on a bottle of red wine, you can be sure it'll be exquisite.



THE ROYAL AL ÁNDALUS: YOUR TRAIN • OUR SERVICES

Originally built for the British royal family's vacation rides to the Côte d'Azur, the **AL ÁNDALUS** features classic Belle Epoque style as well as all the amenities of modern life. Its seven sleeping cars offer two categories of cozy compartments; every compartment is equipped with air-condition, private bathroom, shower, and WC. Four spacious salon cars from the 1920s serve as bar and restaurant cars.

- ◆ Two categories to choose from: Gran Clase with two single beds, and the larger Deluxe compartment featuring a double bed
- ◆ Fabulous cuisine: à la carte breakfast, multi-course lunches and dinners in the salon cars
- ◆ Select alcoholic and non-alcoholic beverages during meals on board
- ◆ Overnights in deluxe hotels in Santiago de Compostela and Seville
- ◆ No long waits or exhausting bus tours
- ◆ Shuttle service between hotel and airport on the first and the last day
- ◆ Porter service at train stations
- ◆ Entrance fees and sightseeing included

THE BEST WAY TO TRAVEL THE IBERIAN PENINSULA

1

A UNIQUE ROUTE

EXPLORE

the most significant and pleasurable places on a 10-day private journey between Spain's high north and its deepest south.

2

BE AT HOME

RELAX

in the superior salons and comfy compartments of a nostalgic high-end train with today's amenities.

3

TRANS-IBERIAN CUISINE

DELIGHT

in the exquisite dishes and wines from all over the Iberian Peninsula served on board.





AFRICAN EXPLORER: SAFARIS BY TRAIN

The **AFRICAN EXPLORER** private train makes the dream of railroad safaris in some of Africa's most spectacular landscapes come true on two exclusive routes, one running between South Africa and Namibia, the other covering four countries between the Victoria Falls and the Indian Ocean: South Africa, Zimbabwe, Eswatini (formerly known as Swaziland), and Mozambique.

All compartments on board the African Explorer feature a private bathroom with shower and WC, the well-appointed dining cars serve a wide range of African and European delicacies prepared fresh by our chefs, and in the bar, guests enjoy a selection of world-class South African wines and the tasty Windhoek Lager, filling a journey through remote regions and lonely deserts with all the comforts of modern life.





AFRICAN EXPLORER: A SNEAK PEAK

Enjoy the beauty of Southern Africa on our epic railroad journeys with the **AFRICAN EXPLORER** private train, where the magnificence of the animal world and the diverse landscapes are at

your fingertips. From moonscape-like dunes in the Namibian desert to lush forests, from the Indian Ocean to the Victoria Falls—a safari by private train is the best way to experience the wonders of Africa.



CAPE TOWN's Victoria & Alfred Waterfront is the place to be in South Africa. With about 300 shops, over 50 restaurants and pubs, 11 movie theaters, and 6 museums, the iconic harbor is not only well equipped for all kinds of entertainment but also a supremely photogenic sight.



Most of Windhoek's **CHRIST CHURCH** is assembled from German parts. Emperor Wilhelm donated the windows, his wife the altar.



Enjoy Southern African hospitality and cuisine as well as fine South African wines in the **COZY RESTAURANT CAR**.



This Herero woman's hat looks like a blue version of a cow's horns. And that's exactly what it's supposed to represent, minus the color. The **OTJIKAIYA HAT** is a way of paying respect to the cattle that have been the Herero's most important source of income for generations.



They say that a **LEOPARD** never changes its spots. And one of the best spots for spotting a leopard is Etosha National Park.



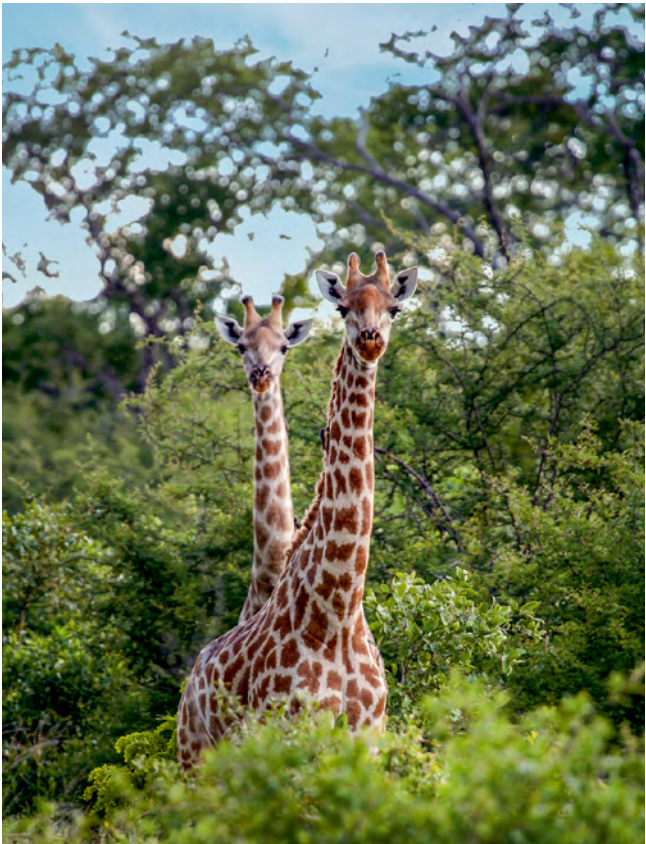
AFRICAN ELEPHANTS spend about 17 hours per day eating. So, since they're out and about looking for food practically all day, you will run into them sooner or later.



Yes, it's a blast to walk up and somersault down the **WORLD'S HIGHEST DUNE** in the Namib Desert. Scrubbing the fine sand out of your pores afterward is another story.



With its 100-mile ravine, Namibia's **FISH RIVER CANYON** is the second largest in the world, surpassed only by the Grand Canyon.



In **HWANGE NATIONAL PARK**, the probability of spotting a two-headed giraffe is low; meeting one of its 40,000 elephants is likelier.



British politician Cecil Rhodes is said to have told architects to build a bridge across the Zambezi River where trains will catch the spray of the gigantic **VICTORIA FALLS**.



AFRICAN EXPLORER: OUR TRAIN • OUR SERVICES

The **AFRICAN EXPLORER** private train is a proper hotel on wheels. All its compartments feature a private bathroom with shower and WC. The two air-conditioned restaurant cars serve African and European culinary specialties. In the bar car, you can relax with a cool Windhoek lager or one of South Africa's famous wines. The train's star attraction is the open observation platform of the cozy lounge car—a paradise for photographers and nature lovers alike, allowing for a true safari on rails.

- ◆ Two compartment categories to choose from: Elephant compartments with a double bed or two single beds and the larger Leopard compartment featuring a little seating area with a table and two chairs
- ◆ All compartments equipped with private bathroom with shower and WC
- ◆ Cozy lounge car with open observation platform
- ◆ Bar service with cocktails, beer, and select South African wines
- ◆ Laid-back atmosphere on board—casual clothing welcome
- ◆ African and European culinary specialties served in two air-conditioned restaurant cars
- ◆ Overnights in first-class hotels and lodges
- ◆ Shuttle service between hotel and airport on the first and the last day
- ◆ Porter service at train stations
- ◆ Game drives, entrance fees, and sightseeing included

THE BEST WAY TO TRAVEL AFRICA'S SOUTH

1 COZY COMPARTMENTS

UNWIND
in the privacy of comfy compartments, all of them equipped with a bathroom featuring shower and WC.

2 SPECTACULAR VIEWS

BE AMAZED
by fantastic panoramas behind the compartment window and on the spectacular open observation deck.

3 AFRICAN HOSPITALITY

INDULGE IN
local specialties, prepared fresh by our chefs, and a selection of world-class South African wines.





TRANSCONTINENTAL TRAIN TRIP ACROSS CANADA

RAILROAD JOURNEY FROM NOVA SCOTIA TO BRITISH COLUMBIA

Our transcontinental railroad trip shows travelers 4,000 miles (6,400 km) of Canadian wonders. It runs across eight provinces **FROM THE ATLANTIC TO THE PACIFIC OCEAN**. The train journey starts in the midst of Nova Scotia's captivating coastal scenery, among lighthouses and fishing villages, and follows the thunderous St. Lawrence River to Quebec and Montreal, where travelers enjoy French joie-de-vivre. Ontario welcomes them to cosmopolitan Toronto and the roaring waters of Niagara Falls. Passing lakes and forests, the rail journey continues through the endless plains of Manitoba and Saskatchewan, on to the

Rocky Mountains, to end in the trendy metropolis of Vancouver.

- ◆ Transcontinental trip from Halifax in Canada's furthest East to the West Coast metropolis of Vancouver
- ◆ Ocean, Corridor, and Canadian: A journey of 4,000 miles on board Canada's legendary trains
- ◆ Eight Canadian provinces, eight different worlds
- ◆ The vastness of Canada's heartland: The provinces of Manitoba and Saskatchewan

- ◆ Maritime lifestyle in the Canadian Atlantic provinces
- ◆ The bustling city of Toronto and the mind-blowing Niagara Falls
- ◆ Fascinating mountain landscapes in Alberta and British Columbia
- ◆ The breathtaking Rocky Mountains with their humongous glaciers and sparkling lakes in Alberta and British Columbia
- ◆ Pacific rainforests in the Vancouver area



SWITZERLAND'S GREAT LITTLE TRAINS

TRAVELING THE SWISS ALPS ON THE COUNTRY'S GREATEST RAILROADS

We've combined **SWITZERLAND'S MOST IMPRESSIVE RAIL ROUTES** and best trains to create the perfect trip in a country that sets unparalleled standards for railroad traveling. Roll from the Matterhorn to ritzy St. Moritz in the panorama cars of the Glacier Express, the world's slowest express train. Enjoy a ride in the Belle Epoque-style cars of the Alpine Classic Pullman Express over Bernina Pass, one of the journey's highlights—in the literal sense. And, on top of hospitality in upscale hotels and on board the trains, experience rides on a nostalgic steamboat and classic cog railroads.

- ◆ Train rides in the panorama cars of the Glacier Express
- ◆ Traveling in the style of 1932 in classic train cars of the Alpine Classic Pullman Express
- ◆ Visits to places with a history of illustrious residents: Charlie Chaplin's Vevey, Audrey Hepburn's Lake Geneva, Vladimir Nabokov's Montreux, and Patricia Highsmith's Locarno
- ◆ UNESCO World Heritage: The Rhaetian Railroad in the Albula and Bernina Landscapes
- ◆ Furka Steam Railroad climbing up to more than 7,000 feet (2,100 meters) over sea level between Realp in the Canton of Uri and Oberwald in the Canton of Valais
- ◆ GoldenPass Line between Montreux, Zweisimmen, and Lenk
- ◆ The famous mountaineering and ski resort of Zermatt
- ◆ Gornergrat Railroad with spectacular views of Matterhorn and Pennine Alps





VIETNAM • JAPAN • AUSTRALIA

TRAIN JOURNEYS IN ASIA AND DOWN UNDER

Vietnam's wonderful World Heritage Sites are best explored with the brand-new **SJOURNEY TRAIN**. But first, a relaxing cruise on a small junk shows travelers the beauty of the Halong Bay. On the ensuing railroad journey from the capital city of Hanoi to the modern metropolis of Saigon, the colorful culture of Vietnam pleases the eye as its delicious culinary specialties served on board of the SJourney train please the palate. Visits to the ancient Emperor's city of Hue, the old trade town of Hoi An, and Phong Nha Ke Bang National Park with its unique network of caves add to the list of wonders on this train journey.



JAPAN is a railroad aficionado's paradise. Traveling its main islands from the far north to the deep south on the country's diverse and unrivaled trains is a sheer delight. Joyful Trains combine Oriental design with culinary delights. Historic locomotives slowly roll in front of landscapes drawn in watercolors. And the Shinkansen swooshes through the mountains at a speed that makes even the cranes crane their necks. Sights along the tracks: Tokyo, Kyoto, Hiroshima, Nagasaki, and Hakone National Park with the holy Fuji volcano. Japan's trains offer a singularly convenient way to explore a country where high-tech and the belief in spirits coexist in perfect harmony.

Australia's **THE GHAN** is a legend on wheels: On its 2,000 mile-journey across the vastness of the Fifth Continent, it rolls from Ocean to Ocean, from Adelaide to Darwin, and on to Cairns. Travelers experience the magic of the Uluru monolith in the country's Red Center, the beauty of the 36 rock domes known as the Olgas, and the natural wonders of Kakadu National Park with its saltwater crocodiles. Stays in Sydney and Alice Springs, visits to the Great Barrier Reef, rides on one of the world's steepest funiculars in the Blue Mountains, and a train ride through the jungle of Queensland complete the picture of a continent of miracles.



LUXURY TRAIN LEGENDS

VENICE SIMPLON-ORIENT-EXPRESS • EASTERN & ORIENTAL EXPRESS • ROYAL SCOTSMAN

The legendary **VENICE SIMPLON-ORIENT-EXPRESS** is undisputedly the world's most famous train. Agatha Christie's Hercule Poirot and Graham Greene secured its immortality in classic literary works. And even though nearly a century has passed since then, the marvelous thing is that the train's luxury atmosphere and gourmet dinners can still be experienced like in the roaring 1920s. On the 2-day journey between Paris and Venice, travelers can choose between the nostalgic original compartments and the new suites reflecting the luxury style of the olden days but offering modern amenities like a private bathroom and WC.



The **EASTERN & ORIENTAL EXPRESS** offers the number one luxury train experience in South-East Asia. Its exquisitely decorated sleeping cars and elegant compartments, a bar car with a pianist, a library, and a salon car, all in the classic style of the early 20th century, send travelers on a nostalgic trip into the past between the lush tropical jungles of Malaysia and the glittering metropolis of Singapore. With its excellent Asian-European cuisine paired with superb wines and first-rate service in the two restaurant cars, the journey on board the Eastern & Oriental Express is pure bliss for sophisticated palates.

The **ROYAL SCOTSMAN** is one of the world's most spectacular luxury trains. Its journey between Edinburgh, Glasgow, the Isle of Bute, Fort William, and Arisaig makes travelers acquainted with lochs, mountains, and the nobility's lifestyle in the Scottish Highlands. Guests are invited into aristocratic homes like the Georgian Mellerstain House and Mount Stuart, Britain's most beautiful Victorian castle. Gourmet menus in the marvelous restaurant car, traditional afternoon teas, excellent wines, and premium whiskies are already included in the arrangement, as is a visit to the Glenkinchie whisky distillery.





BOUTIQUE SHIP CRUISES ON THE MAJESTIC MEKONG

At last, the furthest reaches of the mighty Mekong River, previously inaccessible to travelers, are ready to be discovered. Our three small boutique ships, **MEKONG PEARL**, **MEKONG SUN** and, from fall 2025, the upscale premium boutique ship **MEKONG STAR** make the impossible happen. On our unique cruises between Laos and Thailand, experienced captains guide our ships and guests through awe-inspiring gorges and labyrinths of pristine sandbanks, confidently navigating turbulent waters.

Our boutique ships offer friendly service in a relaxed, old-world atmosphere for 29 guests at most who enjoy local specialties in the onboard restaurant and bar service on the sundeck. The exclusive feel-good ships travel several different routes between Luang Prabang, the Golden Triangle, and Vientiane. Cruises can be as long as 12 days and as short as 6 days, offering a maximum of flexibility.





BOUTIQUE SHIP CRUISES ON THE MEKONG: A SNEAK PEEK

Enter a world of absolute serenity and outstanding natural beauty—pristine, remote, and captivating. The truly unique **MEKONG RIVER** cruises on board our two boutique ships immerse travelers in the tropical

landscape and rich culture of Laos and Thailand. Explore the beauty of the Mekong's tranquil waters, marvel at unspoiled vistas of tropical jungles, and get to know everyday life in secluded villages.



What looks like a traditional Buddhist temple is actually a privately owned and designed piece of art mixing different styles and religious ideas. The vast grounds of Wat Rong Khun in **CHIANG RAI** opened for visitors in 1997. Construction is supposed to be finished in 2070.



GREEN TEA may be associated with China and Japan, but some say that plantations in Thailand and Laos deliver the best quality.



Even though Laos is a landlocked country, Laotians get most of their proteins from fish—courtesy of the **MEKONG RIVER**.



Beautiful clothes, hair, and make-up are very important in Thai culture. Looking dapper is a sign of respect for your fellow humans.



PAK OU in Laos is famous for its curious Buddha caves filled with thousands of Buddha statues in all shapes and sizes.



Enjoy visits to the Wat Xieng Thong temple, a striking example of Buddhist architecture, Mount Pho Si, a hill with panoramic views, and the lively Hmong night market in **LUANG PRABANG**, the former capital of Laos.



EVERY BOY IN LAOS between the age of eight and twenty is expected to serve as a novice monk to work, pray, and study at a monastery for at least three months. For some families from the more rural areas, the monasteries provide the only form of education available.



Profound insights into the **EVERYDAY LIFE IN THE VILLAGES** on the shores of the river make for the most memorable experiences of a Mekong cruise.



Said to possess Buddha-like wisdom and patience, every **ELEPHANT IS SACRED** for a Buddhist and has to be treated with respect. It could be a reincarnation of Buddha himself.



LUANG PRABANG, once the royal capital of the Kingdom of Laos that lasted from 1953 to 1975, is said to be the most beautiful city in Laos, some even say in Southeast Asia. Most parts of the little town of only 66,000 inhabitants were declared UNESCO World Heritage in 1995.



The unique multilevel **KUANG SI FALLS** near Luang Prabang are a favorite of travelers because of the gorgeous natural pools.



A delicious **SPECIALTY DISH** from Thailand: two-colored sticky rice wrapped in banana leaves and then steamed.



STREET MARKETS in Laos are one of the few ways for the tribes living in the mountains to exchange their handicraft for money.



MEKONG PEARL & MEKONG SUN: OUR SHIPS • OUR SERVICES

The **MEKONG PEARL** and the **MEKONG SUN** are sister ships, owned and operated by Lernidee, offering the most enjoyable way to navigate the mighty Mekong. It's old-world charm and contemporary comfort—combined! Every journey on our boutique ships is made unforgettable thanks to the laid-back atmosphere on board, our friendly staff, and of course—dazzling views of the Mekong!

- ◆ Well-appointed cabins, each with large windows, private bathroom and French balcony or even a private balcony with sitting area
- ◆ Laid-back atmosphere with a maximum of 29 travelers on board—casual clothing welcome
- ◆ Daily meals with delights of regional cuisine freshly prepared on board plus coffee, tea, water, snacks, and fresh fruit
- ◆ Bar service available on board, featuring wine, cocktails and local drinks like Beerlao
- ◆ Friendly restaurant and bar staff, serving your meals and drinks with a smile
- ◆ Experienced, multilingual tour director plus English-speaking local guides
- ◆ Bathrobe and slippers for each guest
- ◆ Entrance fees during excursions and sightseeing included
- ◆ Informative and entertaining talks on board about lands, culture, and history
- ◆ Air-conditioned shuttle service between hotel and airport on first and last days





NEW PREMIUM BOUTIQUE SHIP: MEKONG STAR

Fall 2025 comes with an upgrade to how travelers can cruise the majestic Mekong River: Our new premium boutique ship, the **MEKONG STAR**, brings journeys on the Mother of all Waters to a whole new level. With its spacious cabins and suites, all of them with private balcony, its upscale furnishing and design, Wi-Fi in every corner of the ship, gourmet dining and included beverages, the Mekong Star offers an enhanced experience that differs from any cruise this region of Laos and Thailand had to offer so far. The 12 elegant cabins allow for a maximum of 24 guests—making cruises even more exclusive.

- ◆ 12 elegantly appointed cabins for a maximum of 24 guests, creating a private and exclusive atmosphere on board
- ◆ A variety of spacious cabins and suites ranging from Deluxe Cabins with 225 sq ft (21 m²) to Signature Suites with 420 sq ft (39 m²)
- ◆ All cabins feature a private balcony and floor-to-ceiling windows, minibar, safe, and air-conditioning
- ◆ All bathrooms are equipped with rain shower, WC, hair-dryer, and premium bathroom amenities
- ◆ Daily gourmet meals with delights of international and local cuisine freshly prepared on board plus coffee, tea, water, snacks, and fresh fruit
- ◆ House wine, beer, and soft drinks during meals, a sundowner in the evening, one spa treatment per guest
- ◆ Comfy library area, relaxing spa room, a restaurant with indoor and covered outdoor seating, two elegant bars with first-rate service offering cocktails and spirits as well as beer and a selection of wines

THE BEST WAY TO EXPERIENCE THE MEKONG

1

TRAVEL WITH THE PIONEERS

EXPLORE

formerly inaccessible stretches of the Northern Mekong with our exclusive boutique ships.

2

UNIQUE EXPEDITION TOURS

BE SURPRISED

by the mighty Mekong’s caprices. The river decides where your ship docks, so every journey is different.

3

WELL-APPOINTED CABINS

CHOOSE

between Classic, Superior and Deluxe cabins, all of which provide spectacular views.





BOUTIQUE SHIP JUNGLE CRUISES ON THE AMAZING AMAZON

The MS La Jangada makes it possible to explore regions in the jungle formerly only accessible to adventurers willing to forsake every kind of comfort civilization offers.

Discover the hidden reaches of the world's largest rainforest with our boutique ship on several cruises of different lengths. Enjoy the record-breakingly rich flora and fauna of virtually undiscovered pockets of jungle. Encounter the wondrous everyday life of the locals and experience their long-standing traditions firsthand.

There is no better way to explore these remote junglescapes—a Caipirinha in hand, relaxing on the sun deck, breathing in the culture, history, and lush nature of an incomparable region known as the Lungs of the World. Let the people and places of this green paradise enchant you on our unforgettable boutique adventure cruises on the **AMAZON RIVER**.





JUNGLE CRUISES ON THE AMAZING AMAZON: A SNEAK PEEK

Explore Brazil's most beautiful corners on exciting jungle cruises. Our exclusive tours aboard the boutique ship MS Jangada venture forth into the inner reaches of the **AMAZON RAINFOREST**.

Fascinating wildlife is waiting to be discovered: caimans, capybaras, sloths, jaguars, river dolphins, howler monkeys, piranhas, parrots, and hundreds of other exotic species.



The **AMAZON RIVER** is one vast mirror. Taking pictures of it is a sheer delight at all times of day and night—the lush rainforest, the clouds, and the sky are always strikingly reflected in the river's calm surface, and in the specific hue the sunlight or moonlight is bathing everything in.



The **TOUCAN** is one of 1,300 bird species (one third of the world's bird species!) that can be found in the Amazon region.



The 100-ft (30-m) high statue named **CRISTO REDENTOR** (Christ the Redeemer) has been overlooking Rio de Janeiro since 1931.



EXCITING ENCOUNTERS with members of indigenous tribes make you acquainted with everyday life on the Amazon River, teaching you how to survive in the jungle with simple means.



The **PANTANAL** is the largest area of tropical wetlands on the planet. Its ecosystem is so rich that it's impossible to say exactly how many species live here.



Fresher than Amazon Fresh, and with a greater variety, too! Try the **DELICIOUS FRUIT** a real Amazon marketplace offers.



If you suspect that somebody is recording the soundtrack for a horror movie in the middle of the jungle, you're wrong. These eerie noises are just the unsettling calls of the **HOWLER MONKEYS**.



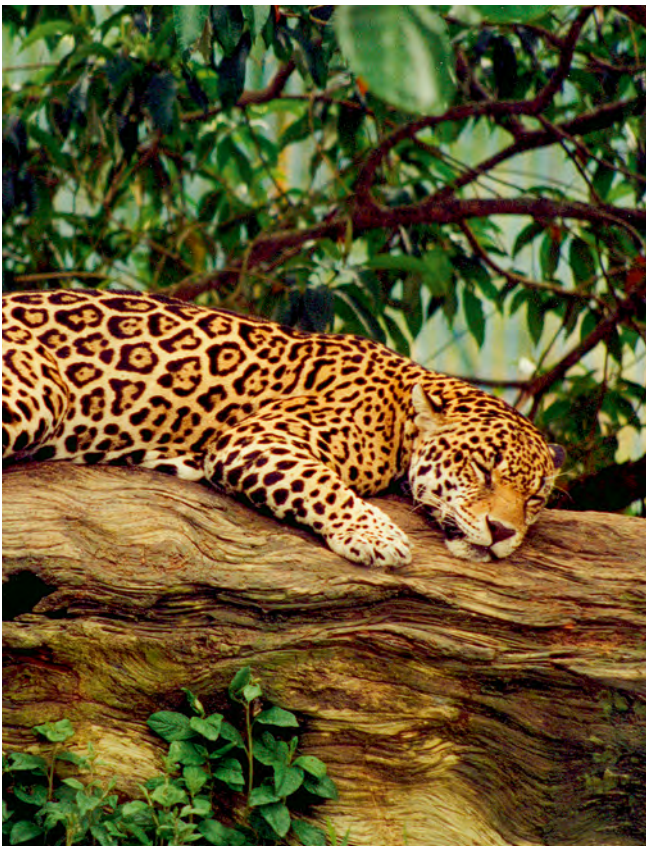
THIS COULD BE YOU. Because you will have the opportunity to fish for piranhas and catfish on our cruises—with helpful instructions from one of our expert guides.



Much taller and twice as wide as Niagara Falls, **IGUAZU FALLS** are record-breaking in many aspects. The giant waterfalls situated on the border of Brazil and Argentina consist of 275 individual cataracts with heights of up to 270 feet (82 m) on a length of 1.7 miles (2.7 km).



On a lucky day the **CAPYBARAS** get away unscathed when they venture into the vicinity of a **CAIMAN**.



Spotting a **JAGUAR** is one of the highlights of an Amazon cruise. Chances are good: 90% of the world's jaguar population live here.



MS LA JANGADA: OUR SHIP • OUR SERVICES

The brand-new boutique ship **MS LA JANGADA** is the best way to discover the wonders of the Amazon River. Its amenities provide a superior level of comfort in a region where there is no infrastructure to be had. In addition to its main and upper decks with their large cabins, the air-conditioned ship features sun and an observation deck allowing for stunning views of the lush rainforest. Its low draft enables it to navigate through some of the shallower stretches of the Amazon River and Rio Negro. On exciting excursions, expert tour guides show you the way through the Amazon jungle's diverse labyrinths.

- ◆ A boutique ship supplying the only kind of infrastructure available in a region without roads, shops, hotels, restaurants, or anything other than nature
- ◆ Spacious cabins with large windows and private bathroom
- ◆ Deluxe cabins and suites on the upper deck with private balconies
- ◆ Relaxed atmosphere with a maximum of 24 travelers on board
- ◆ Experienced, multilingual tour director specialized on the Amazon region
- ◆ Daily meals with delights of regional cuisine like fish, fruits, and vegetables freshly prepared on board
- ◆ Bar service available on board, featuring wine, cocktails, and local drinks like caipirinha
- ◆ Excursions and informative talks about lands, culture, and history
- ◆ Air-conditioned shuttle service between hotel and airport on first and last days

THE BEST WAY TO EXPERIENCE THE AMAZON RIVER

1

NO OTHER INFRASTRUCTURE

REST AND DINE WELL

on a new boutique ship offering all the amenities mother nature doesn't supply.

2

SAFE JUNGLE ADVENTURES

EXPLORE

the secrets of the jungle, fishing piranhas and tracing jaguars with your specialized guide.

3

GET THE BEST VIEWS

TAKE AMAZING PHOTOS

of the junglescape on the stunning observation deck while enjoying a caipirinha or three.





HOLY GANGES!

GANGES RIVER CRUISE ON BOARD THE MODERN BOUTIQUE SHIP RV GANGA VILAS

This epic cruise with the elegant boutique ship RV Ganga Vilas follows the course of the **GANGES** all the way to the vast Ganges Delta, the world's largest river delta. Travelers experience the motley hustle and bustle of the gigantic metropolises of Delhi and Kolkata, they'll be enchanted by the magical carpet of lights on the Ganges River witnessing the holy nocturnal Aarti ceremonies in Varanasi, and have a chance meditate in the shade of the Bodhi tree, the very tree under which Buddha found enlightenment. On this relaxing cruise through India's provinces of Bihar, Jharkhand and West Bengal, guests get

an insight into everyday life along the big river and meet fishermen, craftsmen and monks. And if they haven't seen it already, a trip to the world-famous Taj Mahal will definitely create a memory lasting a lifetime.

- ◆ Exclusive charter with 10 nights on board the modern boutique ship RV Ganga Vilas
- ◆ New ship, completed in 2020, with 18 elegantly designed cabins for a maximum of 36 guests
- ◆ Extraordinary route from Delhi via the city of Varanasi to the Ganges Delta

- ◆ Varanasi with its sacred ceremonies against a dreamy backdrop
- ◆ Bodh Gaya: The place where Buddha found enlightenment
- ◆ India at its most authentic: A day in the village on the banks of the Ganges
- ◆ Kalna, Bengal's treasure chest with its more than 1,000 terracotta domes
- ◆ Delhi and Kolkata: Two metropolises caught between high-tech and ancient traditions
- ◆ Optional day trip to the world-famous Taj Mahal



VANCOUVER ISLAND'S WILDERNESS

EXCLUSIVE CHARTER OF THE SMALL CATAMARAN MV CASCADIA

Vancouver Island, the largest North American **PACIFIC ISLAND**, is reigned by pure wilderness in many parts, offering a home to an impressive range of animals, from gray whales to black bears, from orcas to otters. The rich wildlife isn't just excellent for observing, but it also impresses in terms of taste—just let travelers join the Indigenous people of Kyuquot at one of their traditional salmon bakes. You might be wondering how we plan to explore this island, which in parts lacks all infrastructure. Roads? Where we're going, we don't need roads. That's because we chartered the modern expedition catamaran Cascadia

to circumnavigate the island and moor at places that few visitors ever reach.

- ◆ Exclusive 11-day charter of the expedition-style catamaran MV Cascadia on an extraordinary route circumnavigating Vancouver Island
- ◆ Impressive diversity of nature: Coastal rainforest meets protected islands and the rugged west coast
- ◆ Very private cruise on board an expedition-style catamaran with only 12 comfortable cabins, accommodating 24 guests at most

- ◆ 6 double and 2 single kayaks on board for personal exploration tours
- ◆ Personal, unique moments with locals and Indigenous communities
- ◆ Breathtaking wildlife: Whales, seabirds, marine mammals, and black bears
- ◆ Diverse activities such as beach walks, rainforest hikes, kayaking, explorations by dinghy, and whale-watching
- ◆ Overnight stay in a First Nations lodge in Port Hardy





MADAGASCAR • SOUTH PACIFIC • PAPUA

CRUISES AND EXPEDITIONS INTO THE UNEXPECTED

MADAGASCAR—an island with natural wonders eccentric enough to earn it its own eponymous series of Disney movies. Also, an island without much infrastructure. What could be more fitting than exploring such a quirky place with a yacht like the MS Caledonian Sky, providing top-notch service, elegant cabins, and gourmet meals? A comfy place guests can come back to after their discovery tours of the island's funny fauna: lemurs, sifakas, and of course, the fossa, a cat with a mouse's ears, a teddy's eyes, and a lion's appetite. Plus, our cruise also makes stops at the islands of La Réunion and Mauritius.



Our unique cruise route sends the modern passenger/cargo vessel Aranui 5 to some of the world's most beautiful islands and picture book atolls in the **SOUTH PACIFIC**. It covers three Polynesian archipelagos at once, taking travelers to wonderfully remote postcard islets. From the vast Tuamotu archipelago, the ship heads to the rarely visited Gambier Islands and to the isolated island of Pitcairn, famous as the refuge of the sailors responsible for the mutiny on the Bounty in 1789. Guests even meet the mutineers' descendants and marvel at relics such as the ship's bible, a cannon, and the Bounty's anchor.

PAPUA NEW GUINEA, the mythical island nation in Melanesia, is one of the most remote Pacific destinations in many aspects. The exclusively chartered ship Coral Discoverer takes guests on a unique expedition cruise along the northern coast of Papua New Guinea, through the Bismarck Archipelago, and to the mysterious Sepik River. Travelers witness ancient customs and traditions, masked dances, and even black magic. Above, fiery volcanic giants, vibrant birds of paradise, and parrots – below, one of the most beautiful underwater worlds in the entire Pacific Ocean. This exceptional journey into the unknown truly deserves the title of an expedition.



GREECE • CROATIA • SCOTLAND

EUROPE'S MOST FASCINATING CRUISES

Our exclusive charter of the three-masted motor-sailing ship MS Panorama lets travelers explore the ancient highlights of the southern **GREEK PENINSULA OF PELOPONNESE**, a region that has preserved its untouched character to this day. Guests discover hidden treasures hardly accessible by land, among them five UNESCO World Heritage sites: The Acropolis, Delphi, Epidaurus, Mycenae, and Olympia. They have the opportunity to swim at two of the world's most beautiful beaches: Simos Beach and Voidokilia, and to experience secret gems like the fairytale island of Elafonisos and the fortified villages and pirate nests of the wild Mani peninsula.



On our cruise on board the MS Panorama from Croatia to Athens, travelers uncover Europe's best-kept secret between the Adriatic Sea and the Gulf of Corinth: Albania. Under the rule of the paranoid dictator Enver Hoxha, this country was completely isolated for decades. Along the many untouched coasts between Split and Athens, the MS Panorama takes guests on a journey through time, exploring ancient Greece and delving into the Ottoman Empire. It's an experience of the **MOST BEAUTIFUL PLACES ALONG THE ADRIATIC**, like the wild gorges of the Balkans, Europe's southernmost fjord, dreamy little towns, and islands with postcard-perfect scenery.

The MV Lord of the Glens is the only ship capable of navigating the open waters of the **SCOTTISH COAST** and the complete length of the Caledonian Canal. With its 27 comfy cabins, the ship is a charming boutique hotel floating through the heart of the fabled **SCOTTISH HIGHLANDS** and to the outlandishly beautiful islands of the Inner Hebrides. On their way, guests enjoy visits to rugged castles, picturesque coastal towns, enchanting gardens, and the notorious battlefield of Culloden. They encounter the mythical Highland cows and get a chance to have a pint of lager at Great Britain's most remote pub.





ACKNOWLEDGING OUR RESPONSIBILITY IN OUR DESTINATIONS

Since the foundation of **LERNIDEE** in 1986, the company's founder, Hans Engberding—who has a company bike instead of a company car—has placed great importance on conducting business in an environmentally friendly, socially just, and sustainable way. Here's a selection of our projects.

E-BIKES AGAINST POACHING In the past, gamekeepers in Namibia had to patrol protected areas on foot. Not particularly efficient in the fight against poaching in such a vast territory. At best they had a noisy motorbike that alerted poachers in advance of their arrival. To make it easier for gamekeepers to stop

poachers and save animals' lives, Lernidee donated e-bikes so that they can quickly and silently approach poachers and arrest them.

CLIMATE PROTECTION PROJECT IN THE RAINFOREST In 2007, Lernidee began another project with the aim of sustainably compensating for the CO₂ emissions of their flights by leasing two large areas of rainforest along the upper Mekong River, where a dedicated staff looks after their preservation and reforestation. The leasing of these areas neutralizes Lernidee's carbon footprint (the size of the areas is based on the amount of CO₂ emitted by flights

organized for our guests), provides young people with income to support their families, and prevents overexploitation.

SUBSISTENCE PROJECT FOR WOMEN IN KHAYELITSHA The interior decoration of our African trains comes from a subsistence project for South African women, whose husbands are drug addicts and unable to earn a living.

DOCTORS WITHOUT BORDERS Lernidee's donations to Doctors Without Borders have made treatments for medical conditions such as malaria possible for 10,000 children in Zimbabwe.

PROJECTS SUPPORTED BY OUR GUESTS, OUR PARTNERS, AND US

NOLUTHANDO KINDERGARTEN IN CAPE TOWN In January of 1994, kindergarten teacher Mavis Mbaba founded a day care center for 45 children in her own home in Khayelitsha. In January of 1995, she was able to rent a piece of land from the local council and bit by bit build Noluthando—the Place of Love and Care. Now there are 14 employees, six of which are trained kindergarten teachers, who take care of about 200 children. Since September 1998, the kindergarten has been supported by the kind donations of our guests, which are mainly used to finance maintenance work and improvements,

so that the children get to grow up in a hygienic, child-friendly environment and are given a good start in life.

CONSIDERATE CONDUCT IN OUR DESTINATIONS So as not to overburden our destinations, we visit them only in small groups, respecting protected areas and leaving them cleaner than we found them. We support regional business cycles by hiring staff locally, by paying fair wages and by providing them with regular training. We maintain secure, long-term business relationships in our destinations and pay our fair share of local taxes.

CO₂-NEUTRAL WEBSITES Lernidee participates in the CO₂-Neutral Website Program. Our websites as well as the emissions generated by their use are neutralized by measurable CO₂ reductions. These reductions are accomplished by building new, renewable energy sources such as wind turbines and by participating in controlled CO₂-reducing projects.





EASY-GOING E-BIKE JOURNEYS

Our easy-going e-bike journeys under the **BELVELO** brand are perfect for travelers who like to be a little active during their vacation but still want to see the finest attractions, stay in charming little hotels, and enjoy local dishes and wines. The novelty of this concept, apart from our state-of-the-art e-bikes: Groups of 14 guests tops travel to beautiful places with their accompanying van to start their bike tours from there. We've selected stunning bike routes all over the world at most about 30 miles (48 km) long—and if guests don't feel like cycling, there's always a seat for them in the van.

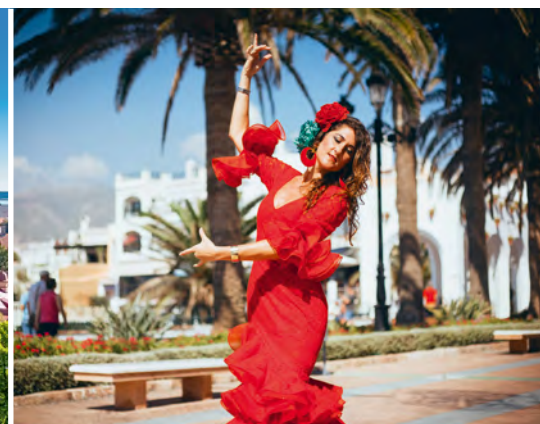
- ◆ Morocco: Atlas, Atlantic Ocean, Sahara
- ◆ Camino de Santiago (Spain/Portugal): From Porto to Santiago de Compostela
- ◆ Andalusia: Treasures of nature and old-world culture in Spain's south
- ◆ Italy: From Monte Grappa and Veneto's vineyards to the Prosecco region
- ◆ Lake Garda: Alpine romance and Mediterranean lifestyle
- ◆ Baltic states: Estonia, Latvia, and Lithuania
- ◆ Great Britain's Lake District: England's wild west
- ◆ Italy: The many-faced Mediterranean island of Sardinia
- ◆ Slovenia: Alpine landscapes, mountain lakes and medieval romances
- ◆ Montenegro: Mediterranean flair and bizarre mountainscapes
- ◆ South Africa: The Garden Route
- ◆ Vietnam: Ocean Cloud Pass and Mekong Delta
- ◆ New Zealand: From Christchurch to Auckland

BUDGET RAILROAD VACATIONS

Traveling the world by train has always been the specialty of Lernidee Trains & Cruises. Admittedly, most of our train journeys are pretty upscale. But our brand-new brand for **BUDGET RAILROAD VACATIONS** allows us to offer spectacular trips with select regular trains for groups between 10 and 25 guests, with expert tour guides, exciting excursions, and overnights in middle-class and first-class hotels.

We're starting with routes in Europe, Asia, and America—but being train specialists, we'll create a Budget Railroad Vacation for your groups to order anywhere in the world. Just ask.

- ◆ Spain: 7-day railroad vacation. Route: Madrid • Valencia • Barcelona
- ◆ Italy: 7-day railroad vacation. Route: Venice • Florence • Pisa • Lucca • Rome • Pompeii • Sorrento
- ◆ Baltic States: 7-day railroad vacation in Lithuania, Latvia, and Estonia. Route: Vilnius • Kaunas • Klaipeda • Riga • Tallinn
- ◆ Turkey: 7-day railroad vacation, partly with the new tourist special train Dogu Ekspresi. Route: Istanbul • Ankara • Erzurum • Kars
- ◆ Canada: 12-day railroad vacation with ViaRail. Route: Toronto • Rocky Mountains • Vancouver
- ◆ India: 10-day railroad vacation. Route: Delhi • Agra • Jaipur • Udaipur • Vadodara • Mumbai
- ◆ Southeast Asia: 12-day railroad vacation in Thailand, Malaysia, and Singapore. Route: Bangkok • Kuala Lumpur • Singapore





PRIVATE TRAIN JOURNEYS & BOUTIQUE SHIP CRUISES

WWW.TRAINS-AND-CRUISES.COM

Meet our sales team

PHOTO CREDITS: Adri Berger, Alberto G, Puras, Axel Heumisch, Belmond - Stefanie Moshhammer, Chris McLennan, Christopher Schmid, Coral Expeditions, Daniel Tischer, David Kirkland, Dennis Schmelz (www.dennisschmelz.de), Dennis Schmelz, Detlev Rösler, DOOK PHOTO, Exotic Heritage Group, Gauravmasand, Gex AG - Stefan Schlumpf, Great Sourthern Rail, Helen Cathcart - Belmond, Hirschberg Studios, Holger Leue, Indian Railway Catering and Tourism Corporation, Isabela Pacini - MERIAN, J. Alonso, Jose Ramalho, Kedar M Dioxidephotography, Klaus Hansen, Klaus-Peter Betz, LD Architecture & Design, Liane Ehlers, Lisa von Bischofinck, Lord of the Glens, Maple Leaf Adventure (GSHEA, Jeff Reynolds, Philip Stone), Martin Kirchner, Martin Platter, Martina Germanova, MÁV Rail Tours, Mehdi Langanke, Patrick Ohligschläger, Paul Papanek, Renfe, Rhätische Bahn - Andrea Badrutt, Rocky Mountaineer, Roland Jung, Ross Hillier, Rovos Rail Tours, SJourney Vietnam Luxury Express, stock.adobe.com (aerial-drone, AlexAnton, Anibal Trejo, Asada, AUFORT Jérôme, bbivirys, Blanscape, BlueOrange Studio, Brady, cge2010, Chalabala, Curioso.Photography, Daniel Ernst, davidionut, DavidShaun, Designpics, dima266f, Dudarev Mikhail, edan, EdNurg, efired, eileen10, Elena Petrova, elgreko, Em7, emperorcosar, Eric Gevaert, f11photo, Felipe Tepedino, Fernando, Frank Merfort, Givaga, glazunoff, GrantRyan, imageBROKER, jannis, joserpizarro, JUAN CARLOS MUNOZ, Karen Mandau, Kavalenkava, Keitma, Kirill, kuarmungadd, Lindsey, Lukassek, majonit, marcelheinzmann, marchello74, Massimo Santi, matho, meneari, Mistervlad, monticellllo, Myroslava, naughtynut, nblxer, Neissl, Nick Dale, Niks Ads, olenatur, ondrejprosicky, OscarStock, Pakorn, Pascale Gueret, Patrick Foto, paula, Philippe SURMELY, Photocreo Bednarek, phubadee, pic3d, poco_bw, Pulsar Imagens, R.M. Nunes, refresh(PIX), rh2010, Roberto Lo Savio, Roman Zurbrügg, Roop Dey, RuslanKphoto, Sam D'Cruz, Sasint, SB Stock, Seanglerd, Shotmakers, sirisakboakaew, SL-Photography, snaptitude, Soloviova Liudmyla, Song_about_summer, Southtownboy Studio, susan flashman, takepicsforfun, Tandem, tawatchai1990, Thirawatana, Tom, travelview, UlyssePixel, ValentinValkov, Vlasta, waj, waku, Wichit S, WONG SZE FEI, wusuowei, Xavier Allard, Yakobchuk Olena), VIA Rail Canada, Volker Renner, World Bicycle Relief